

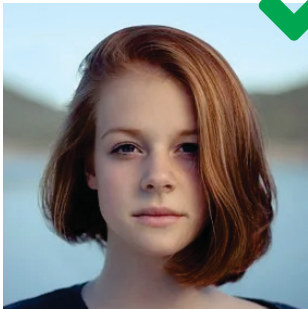
PRODUCT INFORMATION

BIG HEADS

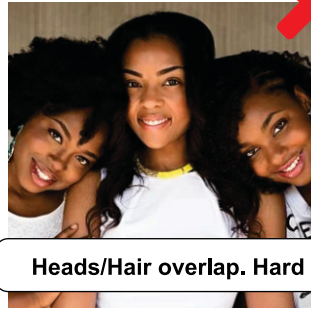
For best results we recommend that you clip out and enlarge your image to the desired printing size. You do not need to remove the background, or add a white edge to the head, just clip out around the head and resize it to the desired size.

We offer our Big Heads in just about any size needed but we recommend that you size your Big Head to one of our most common sizes: 12" Tall, 24" Tall, 36" Tall, and 48" Tall. We can print up to 48" so if you are looking for an in-between size, we can do that too!

GOOD IMAGE

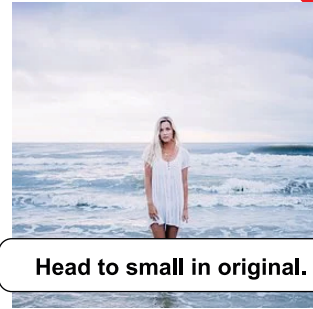


BAD IMAGE

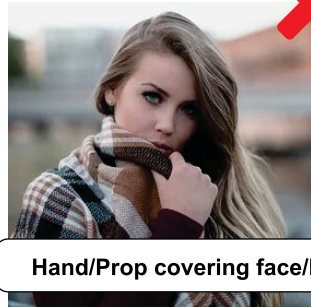


Heads/Hair overlap. Hard to separate.

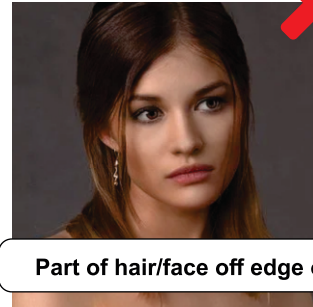
BAD IMAGE



Head too small in original. Low Quality.

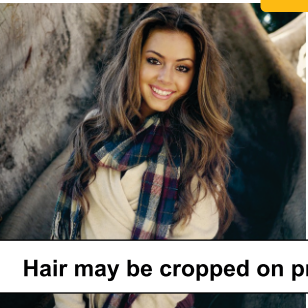


Hand/Prop covering face/hair.



Part of hair/face off edge of photo.

MAYBE



Hair may be cropped on print for best result.

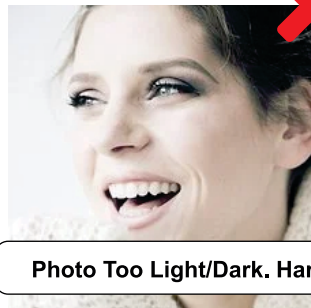


Photo Too Light/Dark. Hard to tell edges.

- 1) Create box size of finished head.
- 2) Place face in box and resize and **FILL** entire box, from top to bottom.
- 3) Make sure nothing important is off edge of image as it won't print.
- 4) Contact us with any questions.